



Matching grant & project overview

Q1-2025 update

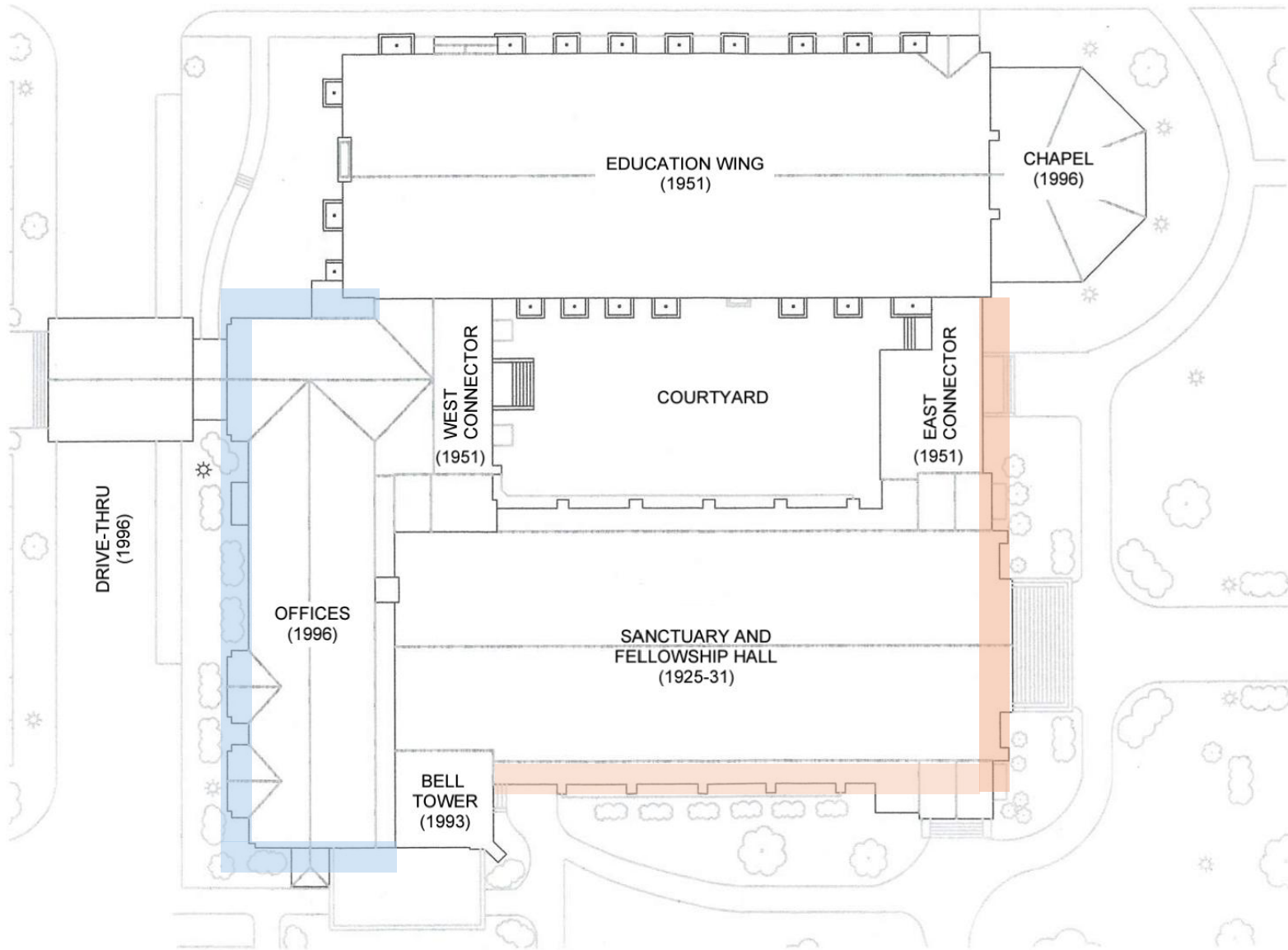


# North Church to receive two building improvement grants

**Seven historic churches were awarded Sacred Places Indiana Fund grants – a new Indiana Landmarks program, funded by the Lilly Endowment.**

- ❖ **\$25,000 planning grant** (fully funded a long-term Building Assessment Plan) - COMPLETED
- ❖ **\$250,000 capital improvement grant** (covers half the cost of North Church's project) – IN PROCESS

**Project: Masonry repairs (est. \$500,000)**



**SITE PLAN** 1  
 1"=30'-0" SK1



High priority and applicable for the Indiana Landmarks grant

High priority; out of scope for the grant



## **NORTH UNITED METHODIST CHURCH**

Exterior Repair Program Update



# Building assessment completed in 2024

**Fully funded by the \$25,000 planning grant**

- ❖ Arsee Engineers have worked with North Church since 2006 – provides continuity, analysis on the rate of change
- ❖ Prior experience with Indiana Landmarks and work on historic places – helps us meet grant criteria
- ❖ Serves as advisor to the Trustees in setting priorities
- ❖ Manages bids, contractors, and the overall project



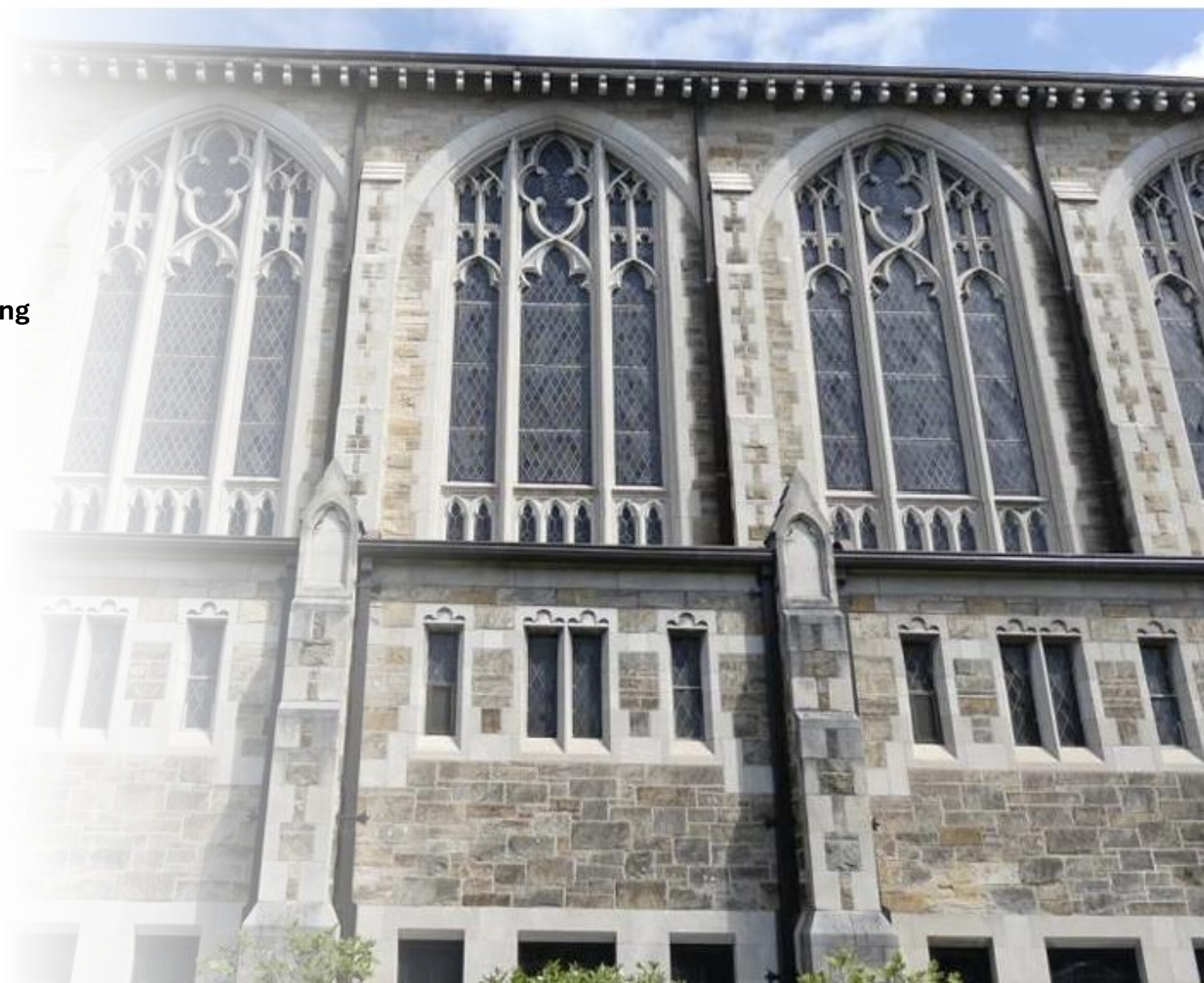
# Findings

## ❖ Normal wear to masonry, addressing it now reduces our cost

- Erosion of mortar joints which allows water infiltration
- Spalls and loose stone shards; deterioration of earlier repairs
- Water damage to wood fascia board beneath gutters
- Leaking downspouts staining masonry
- Deterioration of limestone steps

## ❖ Cracks and shifts in the west elevation 'bump outs'

- On the radar > not eligible for the grant due to the age of that section

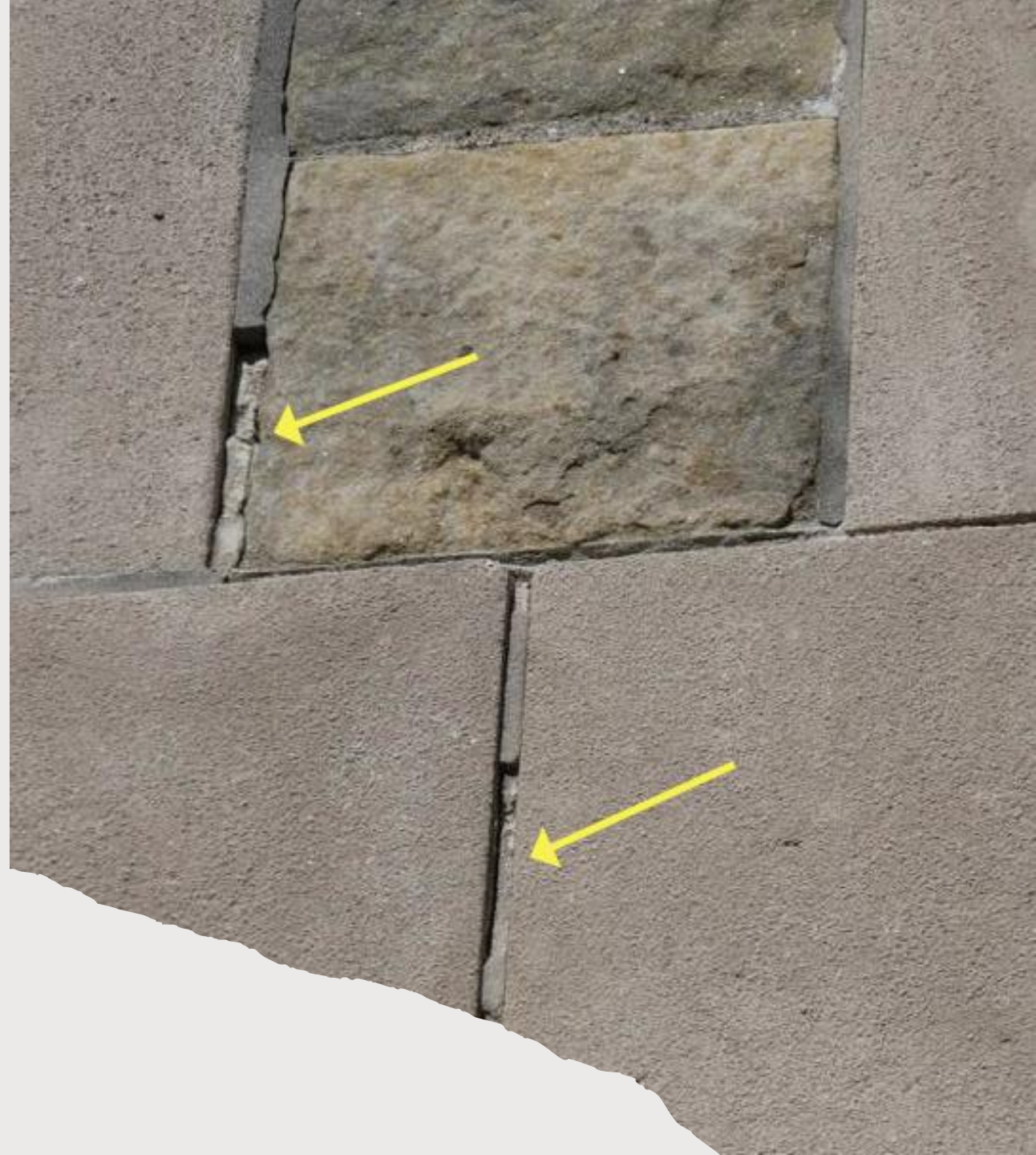






Mortar shards and spalls, exposed and corroding cramp anchors, cracked joints





Mortar joints





Water damage on wood fascia board, leaking downspouts





East entry cracked steps,  
degrading filler repair



The West Entry addition is out of scope for the Indiana Landmarks grant... but on the Trustees' radar





# Timing & next steps

- ✓ Engineering firm with historic preservation expertise selected
- ✓ Initial bids have been issued; additional requests to come
- ❖ Trustees to evaluate bids, finalize costs and timelines
- ❖ Task Force to manage fundraising and secure our match
  - \$100,000 committed to-date
  - \$150,000 to secure by August
- ❖ Construction to finish by early Fall







## Key takeaways

**Our plan is ambitious but prudent – and reduces the cost to North Church**

1. Trustees conducted a detailed building assessment, prioritized repairs
2. The \$500,000 project is approved by the Board, and half of the cost will be covered by a Indiana Landmarks Sacred Places Fund matching grant
3. You can help us meet our match > contribute to the North Church Sacred Places Challenge by September 1 > [Visit https://northchurchindy.com/sacred-places/](https://northchurchindy.com/sacred-places/)